



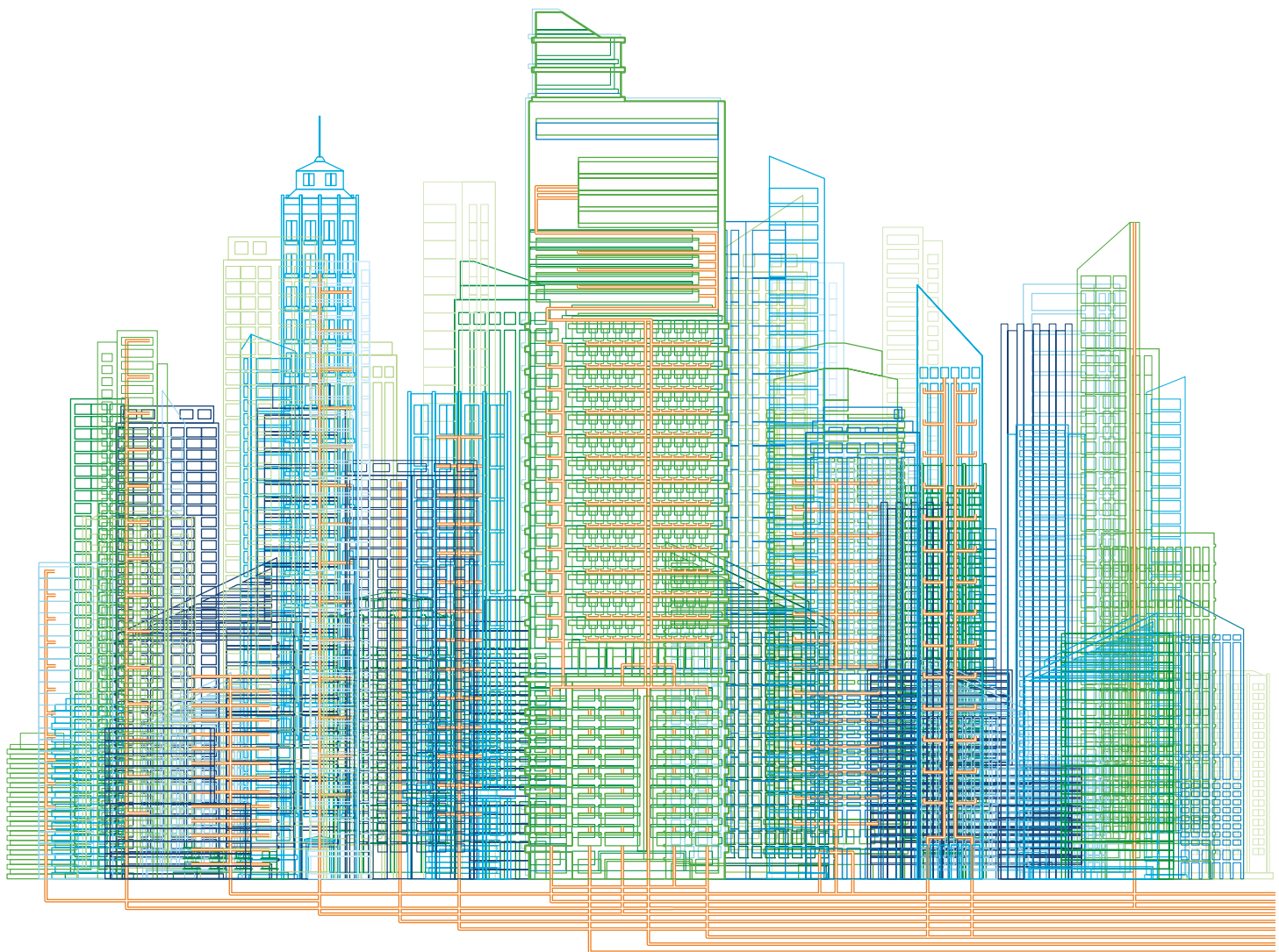
Electrification Products

Power Quality Filters

PQFI – PQFM – PQFS

Harmonics mitigation, load balancing and reactive compensation on LV networks

ABB Power Quality Filters: The most efficient solution for active filtering of harmonics, smooth reactive power compensation and load balancing. Enabling trouble-free and efficient operation of your system.



The cost of poor power quality

Electrical networks with poor power quality result in financial loss, environmental impacts and/or safety concerns.

There are three significant sources of poor power quality caused by a variety of loads in customer installations:

- Harmonic pollution due to non-linear loads
- Load imbalance resulting in voltage imbalance and phase to neutral voltage
- Poor power factor due to lagging/leading currents

Poor power quality costs money due to the following:

- Frequent failures of equipment, nuisance tripping, etc.
- Reduced lifetime of equipment
- Production losses due to unscheduled downtime
- Reduced safety levels of installations
- Increased carbon footprint
- Non-compliance with utility regulations



In addition, there are costs incurred due to extra kWh losses in typical network components such as transformers, cables and motors. These losses when cascaded back to the utility power plants, result in increased CO₂ emissions. The emissions can be significant or marginal depending on the process and the fuel type from which the electrical power is generated.



Note: picture for indication only, as-built design/dimensions may differ

ABB POF active filters are the ultimate answer to tough power quality problems caused by harmonics, load unbalance and reactive power demand

ABB POF active filters can be applied to small, medium or large applications and are suitable for both industrial and commercial installations. They provide harmonic mitigation, load balancing and step-less reactive power control for inductive and capacitive loads. Selection from the large choice of ratings from several tens of Amps to several thousands of Amps enables the optimal solution for each system to be easily defined. The desired filter rating can be obtained by combining different master and slave units. Under normal conditions, the load of the filter will be distributed evenly over all the filter units operating in parallel.

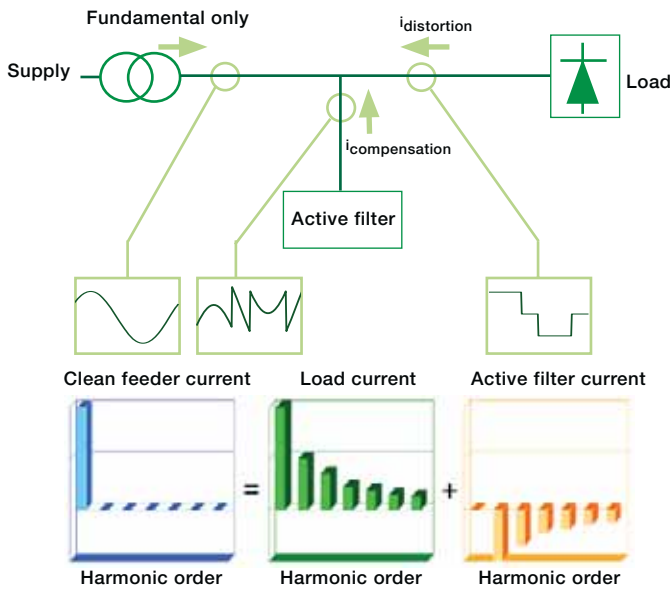
ABB POF active filters can be installed in LV networks. They can also be employed in MV networks through the use of a suitable coupling transformer.

ABB POF active filters offer the following system benefits:

- Reduced production downtime and/or installation downtime.
- Increased system efficiency and reduction of CO₂ emissions.
- Compliance with the strictest power quality regulations thanks to their unique control concept, thereby avoiding penalties and/or refusal by utilities to connect installations to the electrical grid.
- No detailed network analysis required, rapid and easy implementation of the solution.
- Not overloadable, thanks to their active concept, hence well adapted to LV installations where loads are upgraded frequently.

A Unique Operating Principle

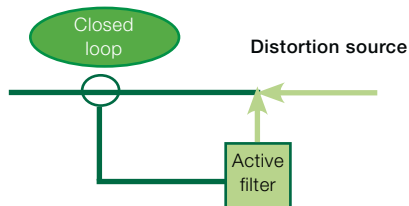
ABB PQF active filters excel thanks to the quality of the compact and user-friendly control system, built according to the highest ABB manufacturing and quality standards.



An ABB PQF active filter is a power electronics based electrical equipment that is installed parallel to the polluting loads. It monitors the line current harmonics, as well as the customer requirements programmed by the user. It can then generate for each harmonic frequency a compensation current in perfect phase opposition to the polluting current.

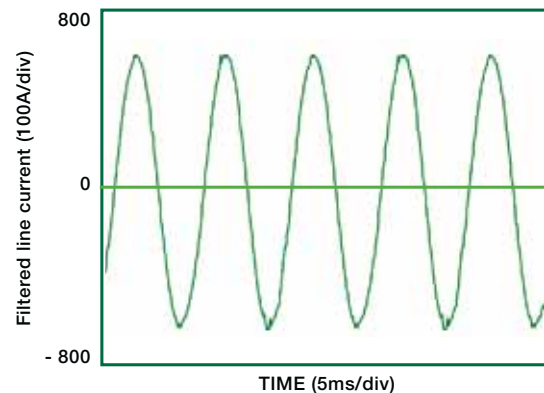
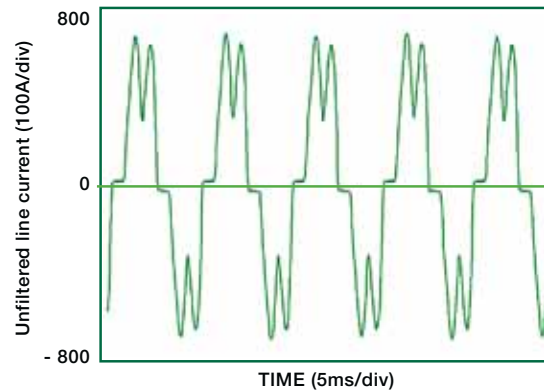
The use of a closed loop control system in combination with the selection capability of individual harmonic components makes the ABB PQF active filter the most precise active filter in the market:

- The closed loop control system measures the line current for each harmonic and reactive power component and compares this with the target set by the customer. Any deviation is automatically eliminated.



- The selection capability of individual harmonic components is the result of an advanced control algorithm. A compensation current with perfect opposite phase is injected for each harmonic selected. This ensures optimal cancellation of all harmonic components that are selected by the user.

This unique ABB technology enables installations to comply with even the most stringent of harmonic regulations and guidelines such as IEEE519, G5/4, etc. Unlike other active filter products on the market, the ABB PQF active filters allow setting individual harmonic target limits as imposed by the regulations.



The closed loop control concept also enables the filter to demonstrate excellent performance for achieving target power factor and load balancing.

Load balancing example

Without filter

Line current 1	49.1 Arms
Line current 2	5.3 Arms
Line current 3	5.1 Arms

Neutral current 44.1 Arms

With filter

Line current 1	19.6 Arms
Line current 2	19.4 Arms
Line current 3	19.5 Arms

Neutral current 3.5 Arms



Peace of Mind

ABB is a leading manufacturer of power quality solutions offering a rich product portfolio to address a variety of power quality problems throughout the complete voltage and application range.

Thanks to ABB's vast first hand experience with power quality issues in the field, the ABB R&D centers are able to bring optimal solutions to the market. As an important added benefit to the customer, ABB products are supported by an unrivalled global service network operating that can support customers at all stages of operation.

The ABB PQF active filters available today are the result of more than a decade of intensive R&D efforts combined with real field experience from a large and ever-expanding installed base. This makes the ABB PQF products the most reliable choice for demanding applications such as safeguarding critical industrial or commercial processes, or rendering installations compliant to prevailing power quality regulations. ABB PQF active filters provide peace of mind to customers. Performance wise, ABB active filters are the very best available today.

Key Product Features and Benefits

ABB PQF active filters ...

Have unprecedented filtering efficiency thanks to the unique closed loop control system and individual harmonic selection capability.

- Filter up to 20 harmonics simultaneously (15 for PQFS in 4-wire mode).
- Selection of harmonics up to the 50th harmonic.
- Harmonic attenuation factor better than 97%.
- Desired harmonic levels can be preset for each selected harmonic.
- Compliance with all aspects of harmonic regulations including compliance with individual harmonic limits.
- Resolving harmonic problems due to both low frequency and high frequency harmonics.
- Increase system reliability.

Can perform stepless reactive power compensation of both inductive and capacitive loads.

- Offload network components resulting in reduced system losses.
- Avoid penalties from utilities.
- Allow generator compensation without the risk of overcompensation.
- Compensate capacitive loads such as modern blade-server systems, allowing for UPS-systems to run at nominal rating.

Can perform load balancing in both 3- and 4-wire systems.

- Reduce the impact on the loads due to voltage unbalance.
- Offload supply cables and neutral cable current wise.
- Reduce the voltage drop between neutral and earth. This increases the safety of the installations and allows sensitive loads to operate.

Raise system reliability to unprecedented levels.

ABB PQF active filters incorporate full redundancy functionality, which allows different filter units to work together in a coordinated and efficient manner and permits compliance with even the most stringent requirements on redundancy imposed in critical applications from data centers to telecom hubs and other sensitive industrial processes.

Depending on the application requirements, the customers can select either a system offering full or limited redundancy.

- With a fully redundant system, the load of any unit in a filter system is taken over by the backup unit(s) if a shut down of a given unit occurs, provided that the appropriate filter capacity is available.
- With a limited redundant system, the load of any slave unit in a filter system is taken over by the other units if the shut down of a slave unit occurs, provided that the appropriate filter capacity is available.

In order to obtain full redundancy, it is necessary to select a filter system consisting of only master units. If limited redundancy is acceptable, a combination of master and slave units can be selected. The degree of redundancy can be varied by selecting more or less master units.



Are designed with the customer requirements in mind.

- Standard products with direct coupling in a wide voltage and current range allowing the optimal choice to be made for each installation.
- Works with standard class CT's, due to closed-loop control
- Modular non-overloadable technology, which can be upgraded in the future.
- User friendly colour touchscreen GUI with network monitoring capabilities and extensive I/O possibilities.
- Automatic thermal derating function switches to derated mode when ambient temperatures increase too much. Hence there is no risk of the system abruptly tripping.
- Compact solution usable in both new and retrofit applications.

Product Portfolio and Application Area

In order to cater to different requirements and applications, ABB PQF active filters are available in different forms, dimensions and ratings.

PQFI



The PQFI active filters are best suited to heavy industrial applications using high power where three phase harmonic loads need to be filtered. The PQFI filters are available as free standing cubicles with a breaker panel for cULus versions.

Typical applications and verticals:

- Water pumping stations and wastewater treatment plants
- Mining and extraction operations
- Hospitals, malls, office towers and data centres
- Oil & gas installations (both onshore and offshore)
- Automobile plants
- Marine applications including vessels
- Traction and railway applications
- Any process plants that have VFD's installed

PQFM



The PQFM active filters are ideal for medium scale industrial three wire applications. They are supplied in compact, free standing cubicles as well as in IP00 modular format, especially for system integrators.

Key benefits to end-users:

- Robust design & build suitable for demanding applications
- Simple to select, setup and operate
- Reduced downtime and higher efficiency of operation
- Reduced equipment maintenance and replacement costs
- Longer equipment operating life
- Compliance to utility guidelines helps avoid penalties
- Local ABB involvement at all stages of implementation
- Full support from specification to after sales service



Product Portfolio and Application Area



Note: picture for indication only, as-built design/dimensions may differ

The PQFS is the ABB compact solution for commercial, residential and light industrial applications for installations with or without neutral. Its wall-mount compact design allows it to be installed at any location where only limited space is available. It can also be integrated by panel builders as part of a complete system.

Note: At this time, PQFS does not bear cULus approvals and is not rated to 600V. IEC versions available on request, with special inspection for CSA, case by case.

Typical applications include:

- Offices and other commercial buildings
- Computer/data centers
- Residential buildings
- UPS-systems, lifts and advanced lighting systems
- Light industrial loads such as remote pumping stations
- Light railway and metro applications, ...



An Excellent User Interface

The new, user-friendly PQF-Manager interface is simpler to setup and easier to communicate with.

The PQF-Manager is the Graphical User Interface (GUI) provided with all PQF filters as a standard controller. It offers direct access to all filters functions and settings without the need of a PC. Communication, diagnostics and time-stamped event logging are also included.

- Fully colour, touchscreen interface
- Supports 6 languages
- Option to connect up to 8 temperature probes
- Configurable master-master and master-slave
- Enhanced help functions



Customer benefits

- Protection available with minimal downtime
- Direct access to key parameters of the installation
- Usable in a variety of supervision systems



Easy commissioning

With auto detection and correction of incorrect CT connections, commissioning is simpler. Further, the Help button gives instant access to a description of key features and functions.

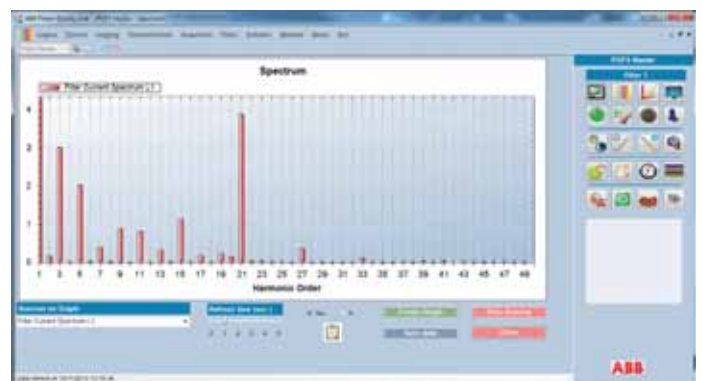
Touchscreen display

With its large dimensions (320 x 240 pixel) and the clear positioning of information, prompts and icons, the PQF-Manager offers a high level of readability and an unprecedented level of viewing comfort. It provides the following main functions :

- Starting, stopping and resetting the filter
- Measurement, analysis and logging of characteristic parameters
- Setting up the filter
- Monitoring the filter load and fault logging

Communication

The PQF-Manager is provided with Modbus RTU and Modbus TCP communication features. Through a Modbus RS-485 converter (optional) or Ethernet, the PQF can be linked to the supervision system of the customer. All parameters, settings and measurements are accessible remotely. Apart from the Modbus communication features, the PQF is also provided with two additional communication ports, a mini-USB and an RJ45 (Ethernet) port. Using our proprietary Windows® based software called PQ-Link and a computer, one can communicate with the filter locally or from a remote location. An IP address is required to use connectivity over Ethernet communication channel. Optional wireless access with read-only or full read-write access is available on special request, as a local solution for North America. Please contact your local sales rep or email pqs_rfq@ca.abb.com for more information on this.



Filter Specifications

Model	PQFI	PQFM	PQFS
Electrical characteristics			
Connection method	3-wire		3-wire/4-wire
Network voltage ⁽¹⁾ Note: select V2 for 600V	V1: 208-480V V2: 480-600V for cULus version and upto 690V for IEC version		208-240V 380-415V
Network frequency	50 Hz/60 Hz - +/- 5%		
Line current rating per base unit (A _{rms})	V1: 300A, 450A V2: 180A, 320A ⁽²⁾	V1: 70A, 100A, 130A, 150A V2: 100A	30A, 45A, 60A, 70A, 80A, 90A, 100A, 120A
Neutral current rating per base unit (A _{rms})	-	-	3 times the line current rating ⁽³⁾
Modularity ⁽⁴⁾	Maximum 8 units can be combined		Maximum 4 units combined
Redundancy ⁽⁵⁾	Master/master or master/slave arrangement		
Equipment losses	3% of the equipment power typically		
Internal power circuit protection	Main breaker	Fuse block + Class J fuse standard incoming protection	-
Filter characteristics			
Harmonic range	2 nd to 50 th order		
Harmonics selectable simultaneously	20 orders		3-wire: 20 orders 4-wire: 15 orders
Filtering degree	Programmable per harmonic in absolute Ampere value		
Harmonic attenuation factor (I _H (source)/I _H (load))	Better than 97% at rated load		
Reaction time	< 0.5 ms instantaneous response		
Response time	2 networks cycles typically (10-90% filtering)		
Reactive power characteristics			
Target cos φ	Programmable from 0.6 (inductive) to 0.6 (capacitive) ⁽⁶⁾		
Load balancing characteristics			
Modes	L-L: ON/OFF		L-L: ON/OFF L-N: ON/OFF
Programming/Communication			
Digital I/O	2 digital inputs/6 digital outputs and one NO Fan contact (potential free)		
Alarm contact	1 NO/NC alarm contact (potential free)		
Programming/Monitoring	Using PQF-Manager GUI One standard Modbus TCP Ethernet or optional Modbus RTU interface PQF-Link software (optional extra)		

(1) Acceptable network voltage tolerance is +/- 10%.

(2) If the system voltage is higher than 600 V, the current rating of this unit may be derated automatically depending on the load conditions for ambient temperatures higher than 30°C/86°F.

(3) Neutral current rating of PQFS 100 A units is limited to 270 Arms.

(4) A PQF filter system consists of a combination of base units selected within a type and voltage category. The base units can be of master or of slave type.

- For PQFI and PQFM filters, units of a different rating may be combined. For PQFM filters, maximum one unit rating difference between the largest and the smallest unit in a system is allowed. e.g. PQFM 150 A + PQFM 130 A.

- For PQFS filters, the units of a filter system must all have the same ratings

(5) For full redundancy only master units to be combined. If limited redundancy is acceptable, master and slave units can be combined. The desired redundancy level can be obtained by selecting more or less master units

(6) If cos phi of the installation is higher than the target cos phi, the filter will not downgrade the existing cos phi, in other words the best possible power factor is maintained

(7) PQFS is not available for 600V networks in Canada and do not carry cULus approvals at this time. IEC versions can be supplied on request

Model	PQFI	PQFM	PQFS
Physical aspects (per base unit)			
Mounting	Free standing cubicle (PQFI and PQFM) or IP00 module (PQFM only)		Wall-mount enclosure
Approximate dimensions	1400 x 800 x 2150 mm	600 x 600 x 2150 mm (cubicle)	585 x 310 x 700 mm
W x D x H)		498 x 400 x 1697 mm (plate/module)	
Approximate weight (unpacked)	180A/300A = 710/750 kg	260 kg (cubicle)	120 kg
Check manual for correct weight	320A/450A = 650/750 kg	180 kg (plate/module)	
Color	RAL 7035 (light gray)		
Installation aspects			
Altitude	Indoor installation in clean environment up to 1000 m altitude ⁽¹⁾		
Ambient temperature	-10°C to 40°C ⁽¹⁾		
Humidity	Maximum 95% relative humidity, non-condensing ⁽²⁾		
Fixation	Floor fixation/lifting lugs provided		Wall-mounted
Cable entry	Bottom	Top or bottom (to be specified at time of ordering)	Bottom
CT requirements	3 CT's are required (class 1.0 or better)		
	<ul style="list-style-type: none"> • Filter burden: 5VA for upto 8 units • Secondary rating: 5 A 		
	CT's must be installed in closed loop configuration		
IP protection	IP21 Optional: IP41 ⁽³⁾	Plate version: IP00 Cubicle version: IP21 Optional: IP41 ⁽³⁾	IP30

(1) Higher altitudes (up to 2000 m/ 6600 ft max.) and temperatures (up to 50°C/122°F max.) with suitable derating.

(2) The maximum relative humidity for operational purposes is 95%. When the units are stored for a longer time, do not exceed a relative humidity of 85%.

(3) For IP41 models, 10% derating applies.

The data here presented is an extract of the complete product specification. Please refer to the document “PQFI-PQFM-PQFK-PQFS detailed technical specifications” for more technical information or please contact pqs_rfq@ca.abb.com for specific questions

Examples of unit combinations

PQFI

Filter line current	Unit combinations for PQFI - V2
180 A	PQFI-V2-M18
320 A	PQFI-V2-M32
500 A	PQFI-V2-M32 + S18

PQFM

Filter line current	Unit combinations for PQFM - V2
100 A	PQFM-V2-M10
200 A	PQFM-V2-M10 + S10
300 A	PQFM-V2-M10 + S10 + S10

PQFS

Filter line current	Unit combinations for PQFS
60 A	PQFS-M06
100 A	PQFS-M10
120 A	PQFS-M06 + S06
180 A	PQFS-M09 + S09
200 A	PQFS-M10 + S10

Notes:

- Several levels of redundancy can be obtained by selecting more or less master units. In order to obtain full redundancy replace all slave units by master units.
- Other ratings can be obtained by combining the appropriate base units.
- A variety of options and customizations are available for specific applications, please contact pqs_rfq@ca.abb.com for more information and special requests.
- PQFS does **not** have default cULus approvals at this time and is not rated to 600V networks in Canada. IEC versions can be supplied on request for specific voltages and applications below 415V, with CSA special inspection for local project requirements, to be discussed.
- PQFM and PQFI are available in two versions, that is 208-480V (V1) and 480-600V (V2) and all with standard cULus approval.

Contact Us

ABB Inc.
Electrification Products
Low Voltage Power Quality

800 boulevard Hymus
Saint-Laurent, Quebec
H4S 0B5, Canada

Toll-free: **1 800-567-0283**

Tech support: ep.support@ca.abb.com

Price requests: pqs_rfq@ca.abb.com

Webpage: <http://new.abb.com/high-voltage/capacitors/lv>

While all care has been taken to ensure that the information contained in this publication is correct, no responsibility can be accepted for any inaccuracy. The Company reserves the right to alter or modify the information contained herein at any time in the light of technical or other developments. Technical specifications are valid under normal operating conditions only. The Company does not accept any responsibility for any misuse of the product and cannot be held liable for indirect or consequential damages.

©Copyright 2017 ABB Inc. All rights reserved.

